



Welcome to Ysgol Betws GG

I would like to welcome you as parents of Ysgol Betws Gwerful Goch. This information leaflet shares with you how things work in the School. You might be aware of some things already by speaking to other parents or if you already have children here with us, but as your child starts their journey through Ysgol Betws Gwerful Goch, I hope it will be of use to you all.

If you have any concerns or need more information about anything on this leaflet, you are more than welcome to contact us at any time in school.

Many thanks

Mrs Thomas, Head of Ysgol Betws GG




Dysgu fel teulu, tyfu fel cymuned

September 2022

Reading and Forming Letters

We use a Welsh Phonics programme called Tric a Chlic in Ysgol Bro Elwern. The children get the opportunity daily to recognise and say their letters as well as learning to form them correctly. If your child writes at home it is important that you follow the same formation patterns as we do shown below, and we always start on the red spot!

a b c ch d dd e f
 ff g ng h i j l
 ll m n o p ph r
 rh s t th u w y



Morning Snack

During the morning the younger children are given a drink of milk or water and a small snack. You are asked to send in a healthy snack for them. We don't allow grapes but we welcome all other types of fruit.



Physical Education

Physical Education lessons are held on the designated days.



We ask the children to come into school wearing their PE kit on this day. PE kit is a school t shirt, black shorts, joggers or leggings and trainers on their feet.

Number Formation

It is also important that we follow the same pattern for formation of numbers at home and school. Here is how we form our numbers in school.



Sharing Information

We always email parents with letters or any important information. Additionally we share information and photos of weekly activities on our Facebook page. It is a closed group for parents only so we would encourage you to join.

We would like to remind you that there is no expectation for staff to respond to any questions on facebook outside of working hours. It is always best to contact us in school if you have any questions or concerns.

Behaviour

Our aim is to create a happy and homely atmosphere within the school—and to create a feeling of self-discipline. We operate a consistent approach to this using the traffic light system as detailed below.

Encouraging Positive Behaviour

- Be courteous
- Speak in Welsh
- Trying your best in every aspect of your work
- Good listening
- Follow school rules

Every child starts the day on green.

- Not listening
- Interrupting
- Name calling
- Being silly
- Not showing respect or good manners towards others

- Name on orange if they continue to do one of the above after a warning.
- Miss 10 minutes of playtime.
- Back on green at the end of the session.

- Continuous lack of respect and rudeness
- Hurting others
- Damaging school property
- Running away
- Stealing
- Swearing

- Name on red if does any of the above.
- Sent to see the Headteacher
- Letter home or a phone call
- Miss playtime
- Has to apologise
- Back on green at the end of the session.

Kind Request

We kindly ask you not to allow your child to bring any toys with them to school please. If they do, we will keep them safe until going home time.

We do not accept birthday cakes into school to share with others this is in case of allergies.

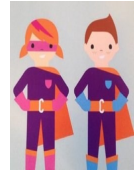
Healthy Eating

We are a Healthy School in Betws GG so we encourage healthy eating and drinking. We do not allow pop or similar in children's water bottles.

Speaking Welsh

Betws GG is a Welsh School so we expect our children to speak Welsh within the classroom, school and yard.

We have Language Ambassadors who work throughout the year on different ideas to encourage the use of Welsh.



School Uniform

Black or grey skirt (can wear dark tights)

Black or grey trousers

Blue polo shirt

Jumper with school logo

Long hair worn back or platted

Can wear summer dress in the summer

Stud earrings only

Dark Shoes (no trainers)

Arriving at School

Children can arrive in school 8.45–9.00. They come to the front door where a member of staff is on duty. They are on the school yard until the bell rings at 9.00.



Parents' Evenings

We hold Parents' Evening in Term 1 and Term 3. We share information in relation to these nearer the dates.



Collecting your Child

School finishes at **3.15 promptly**. We ask you to let us know if there is any change to the normal arrangements to picking your child up from school please.



Betws GG



@YsgolBetwsGG